

### Cleft Director

**Vikash K. Modi, MD, FAAP**, is the Co-Director of the Pediatric Craniofacial and Velopharyngeal Center. He is an Associate Processor and Chief of Pediatric Otolaryngology at Weill Cornell Medicine. Dr. Modi is a board certified Pediatric Otolaryngologist, Head and Neck Surgeon and has a particular expertise in cleft palate and velopharyngeal dysfunction. Dr. Modi participates in medical trips to treat head and neck anomalies, including cleft lip and cleft palate, in developing countries. He has been selected as a "Top Doctor in America" by *Castle Connolly*, "Best Doctor" in *New York Family Magazine*, and as "Best Doctor" in *New York Magazine*. Dr. Modi has also been featured in the press for his work with children.



### Neurosurgical Director

**Caitlin Hoffman, MD**, is the Co-Director of the Pediatric Craniofacial Center. Dr. Hoffman is a board-certified neurosurgeon who specializes in pediatric neurosurgery and pediatric epilepsy surgery. Dr. Hoffman's clinical research includes venous anomalies in craniosynostosis, early surgical treatment for Rasmussen's encephalitis, minimally invasive methods of treating hydrocephalus and intracranial cysts, and the characteristics and safety of invasive monitoring for pediatric neurovascular disorders. Dr. Hoffman has published academic papers in leading journals including *Cancer Research*, *Nature Medicine*, *Neurosurgery*, and *Journal of Neurosurgery*.



**Our goal is to return patients back to normal activities as soon as possible. That's why we use the most advanced surgical treatments, including the latest minimally invasive surgical techniques. We get children back to the business of being children.**

**Call 646-962-4321 and make an appointment today**

<https://ent.weill.cornell.edu/patients/clinical-specialties/services/cleft-and-craniofacial-team>



## Pediatric Cleft and Craniofacial Team

The Pediatric Cleft and Craniofacial Team at NewYork-Presbyterian Weill Cornell Medical Center

Caring For Children and Young Adults With Face, Skull and Jaw Medical Conditions



## Our Services and Referring Professionals

We care about patient comfort and convenience. When a family comes to the Pediatric Craniofacial Clinic, they will see all the specialists they need to see—whether it's two or ten-in-one place, in one session. After the visit, our experts meet to create a personalized treatment plan to meet each patient's needs, from the moment of initial consultation through treatment and beyond.

Referring professionals are important to us. When a patient is referred by a pediatrician or any medical professional, we will communicate with them our recommendations for treatment. We work with all providers to make sure patients receive coordinated, complete care.



### Our Pediatric Team

- Audiology
- Child Life
- Critical Care/ Intensive Care
- Developmental Pediatrics
- Facial Plastic Surgery
- Genetics
- Neonatology
- Neurology
- Neuropsychology
- Pediatric Dentistry
- Pediatric Gastroenterology
- Pediatric Neurosurgery
- Pediatric Ophthalmology and Oculoplastic Surgery
- Pediatric Oral and Maxillofacial Surgery
- Pediatric Orthodontics
- Pediatric Otolaryngology (Head and Neck Surgery)
- Pediatric Prosthodontics (Nasoalveolar Molding—NAM)
- Pediatric Pulmonology
- Pediatric Sleep Medicine
- Pediatric Speech Pathology
- Physical and Occupational Therapy
- Social Work

## We Specialize in the Following Conditions



### Cleft Lip and Palate Care

Exceptional care is led by a team of facial plastic surgeons, pediatric oral surgeons, and pediatric otolaryngologists at the Pediatric Craniofacial Center. Our spectrum of care extends from early prenatal life into adulthood, ranging from prenatal ultrasonography and advanced genetic testing and counselling, to surgical correction of cleft lip and palate in the first year of life. We provide close developmental monitoring for each child, in a comprehensive team setting. Our treatment goal is focused on all social, cosmetic, and functional aspects of cleft lip and palate, including speech, swallowing, velopharyngeal dysfunction, and hearing.

### Associated Cleft Issues

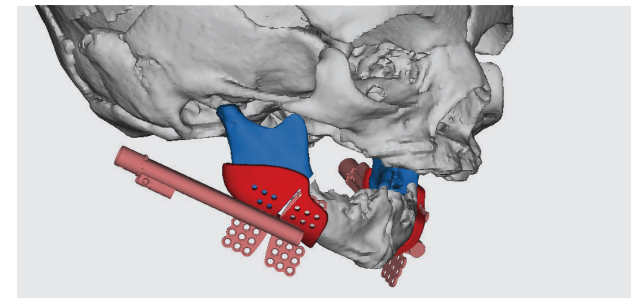
- Cleft Rhinoplasty
- Cleft Dental Care
- Cleft Orthodontics
- Orthognathic Surgery
- Hemifacial Microsomia
- Pierre Robin Sequence
- Syndromic Conditions (Apert s, Treacher Collins, Crouzon s, etc)
- Prosthodontics (Nasoalveolar Molding)

## Velopharyngeal Dysfunction

Many patients who have had cleft palate surgery will suffer from velopharyngeal dysfunction (VPD). Using cutting-edge distal chip technology, our pediatric otolaryngologists team up with pediatric speech pathologists to assess resonance and perform nasometry and nasopharyngoscopy. The team then meets to develop a specialized treatment regimen, which is unique to each patient. Our surgeons have years of clinical experience in complicated VPD surgery, which includes pharyngeal flap, sphincteroplasty, injection augmentation pharyngoplasty, and furrow palatoplasty.

## Oral Maxillofacial Services

Often children affected with craniofacial disorders will have dental and maxillofacial issues. Our oral maxillofacial team consists of surgeons, pediatric dentists, prosthodontists, and orthodontists who use the latest 3D imaging and printing to provide tailored care for each child. We treat neonates with Pierre Robin sequence requiring mandibular distraction or cleft lip children requiring nasoalveolar molding (NAM).



Our care extends to older children needing corrective jaw surgery, alveolar bone grafting, closure of the oral nasal fistula, functional/interceptive orthodontics and maxillofacial prosthodontics.

Our multidisciplinary craniofacial team prides itself on working together to provide a tailored approach to each patient.